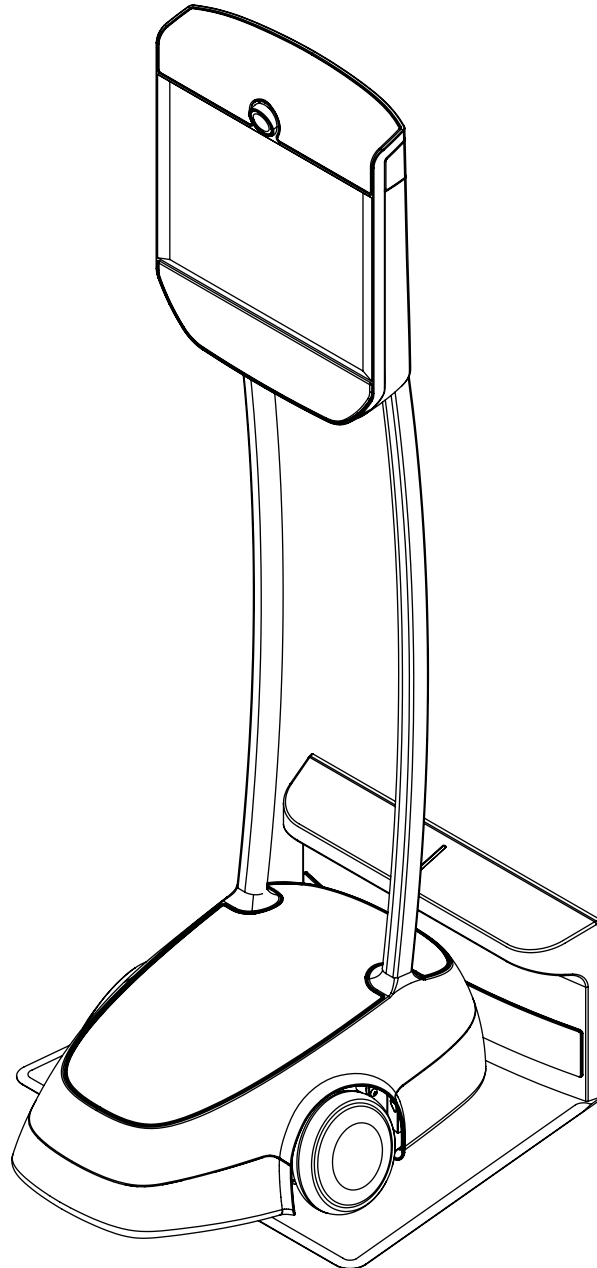


beampro™  
www.suitabletech.com

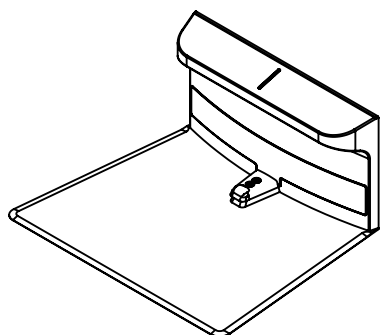


**BeamPro™ Smart Presence™ Device Setup (Crate Delivery)**

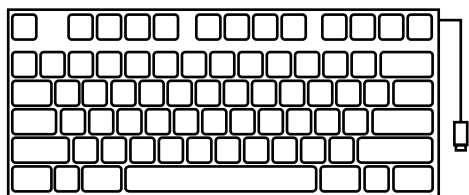
# BeamPro System Component Packing List



(1) BeamPro™ Smart Presence™ Device



(1) BeamPro Dock + Power Cable



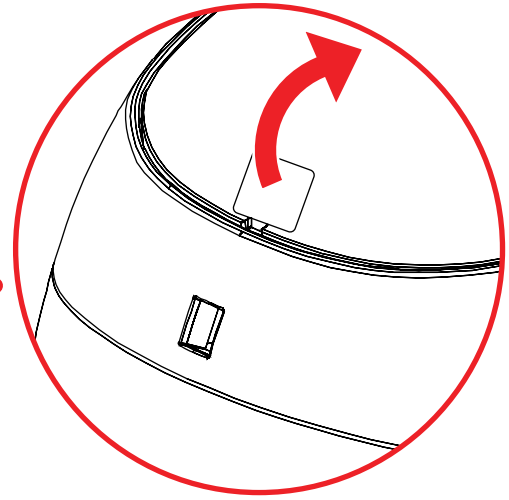
(1) USB Keyboard (style may vary)



(1) Instruction Manual

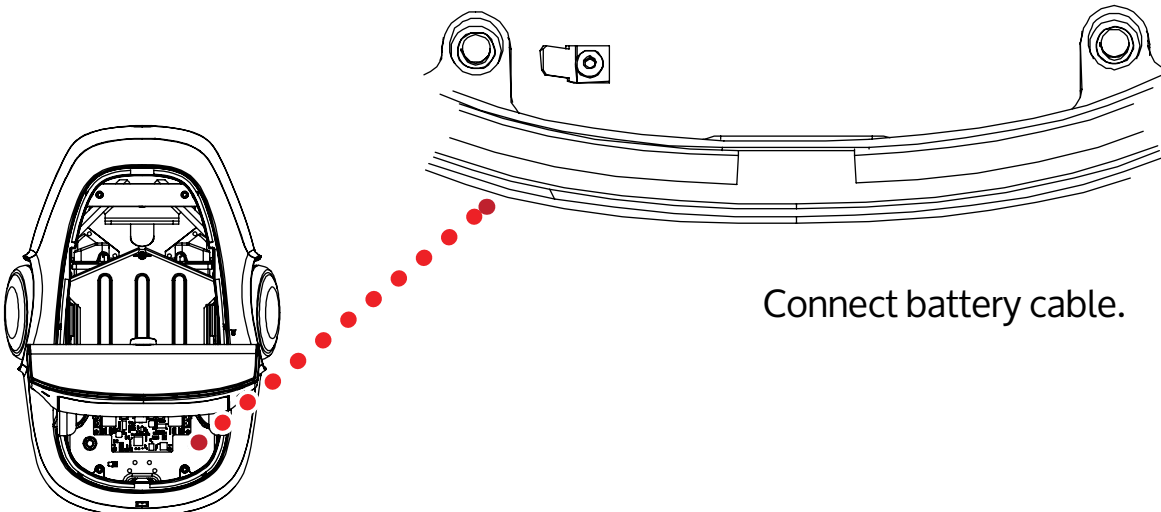
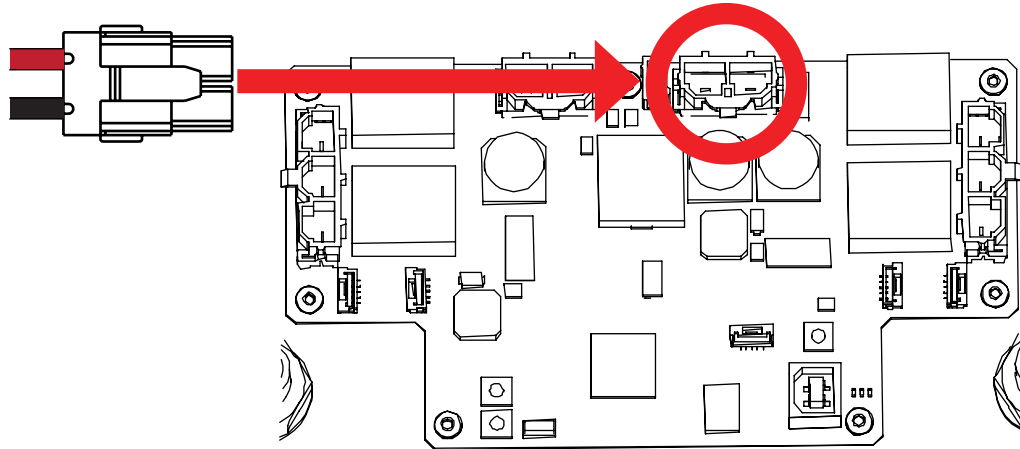
# BeamPro Setup Instructions

1.



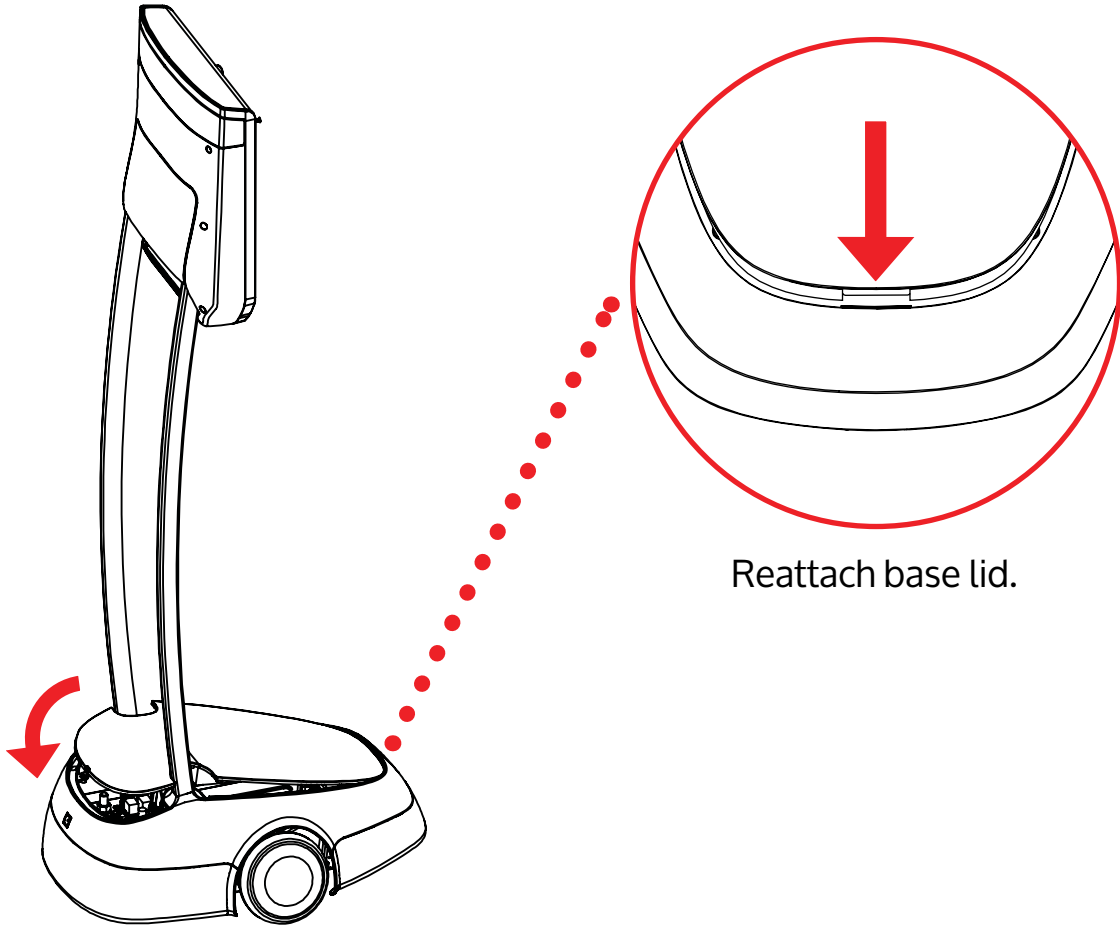
Pull on tag to open base lid.  
Discard tag after use.

2.

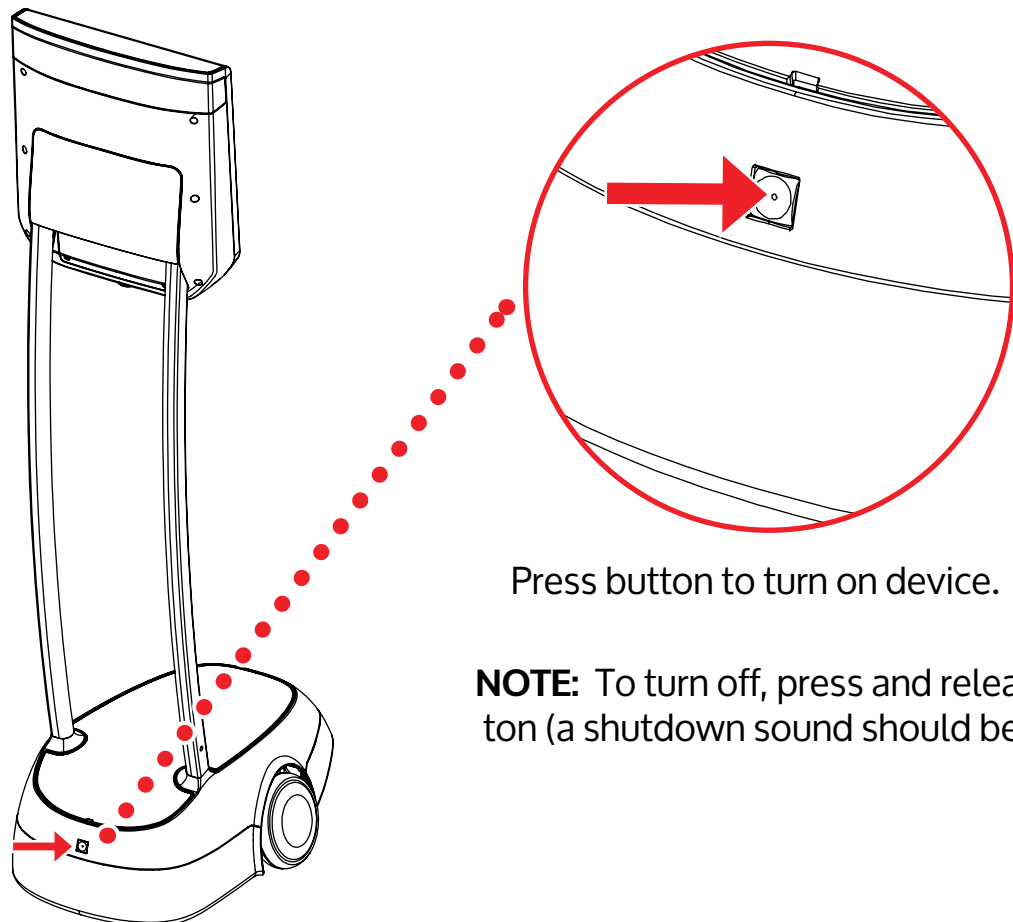


Connect battery cable.

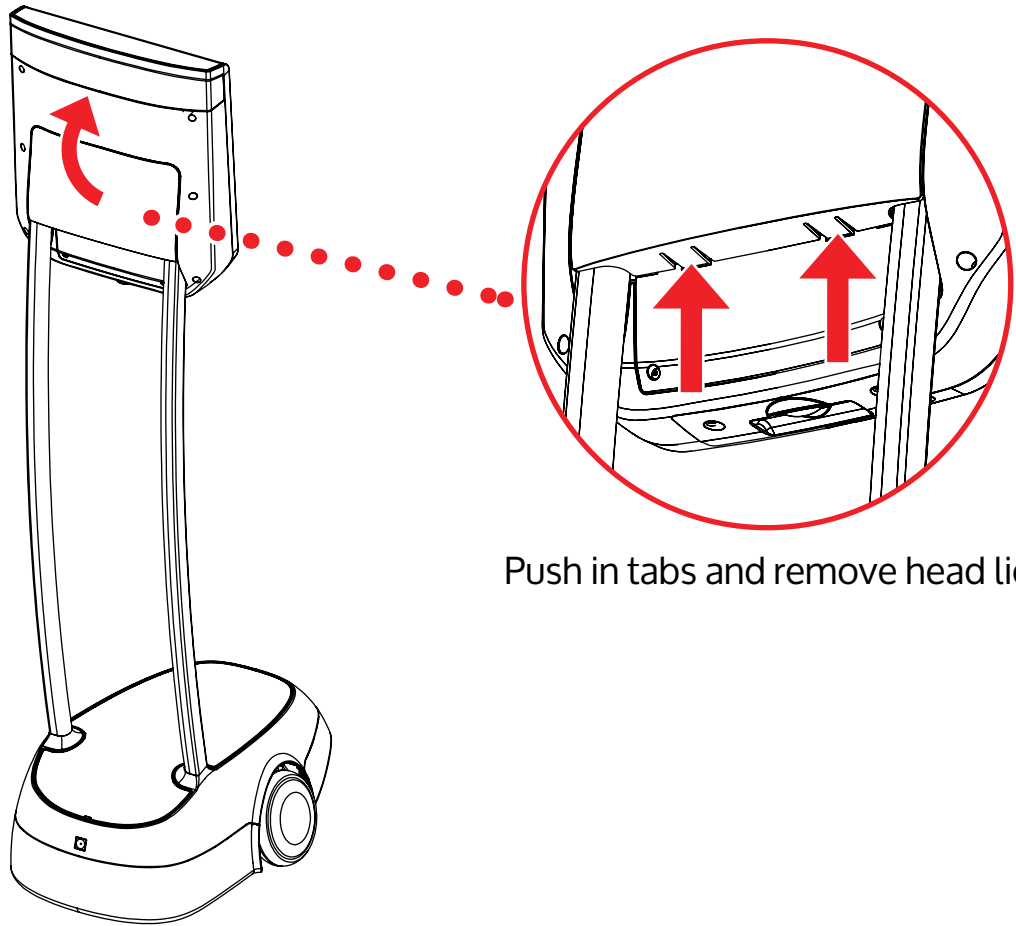
3.



4.

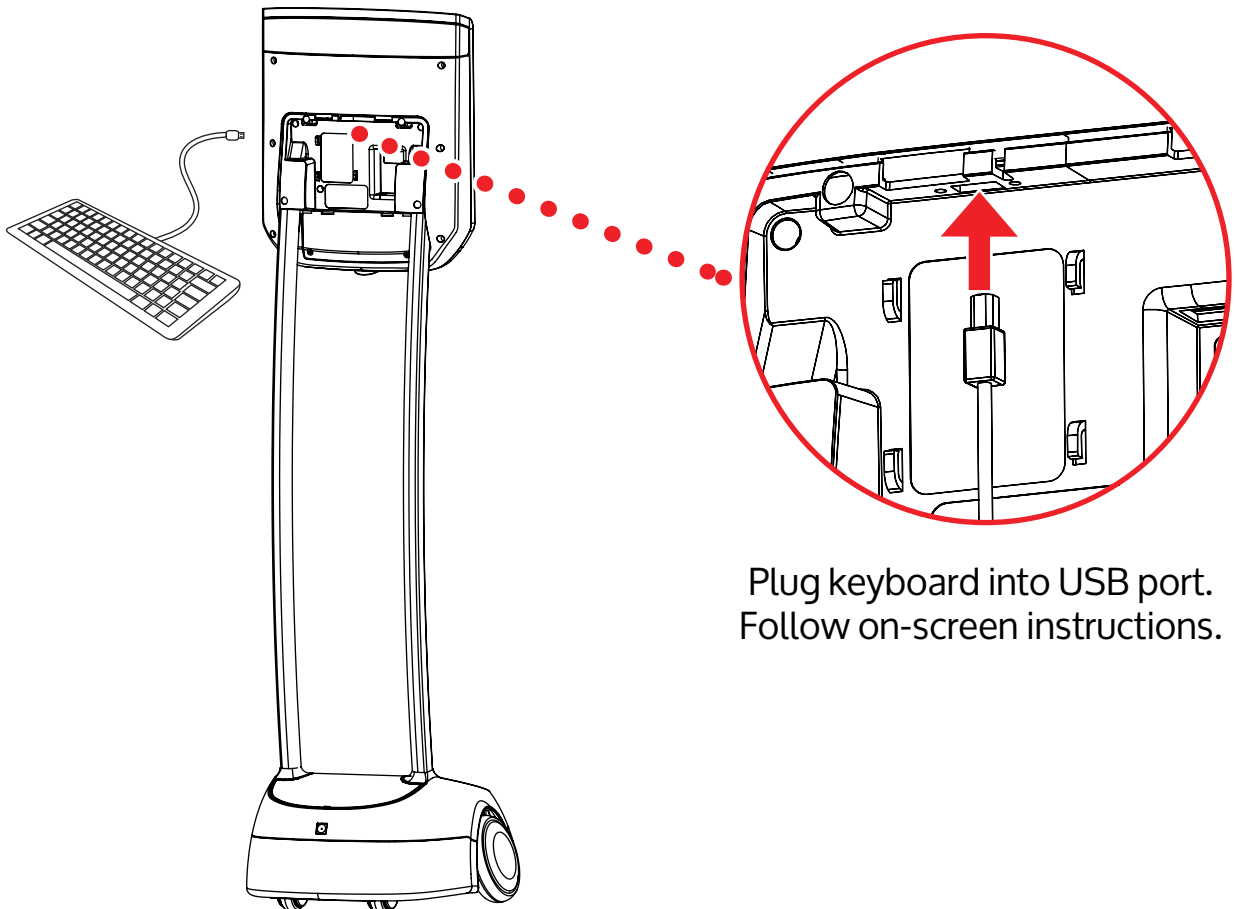


5.



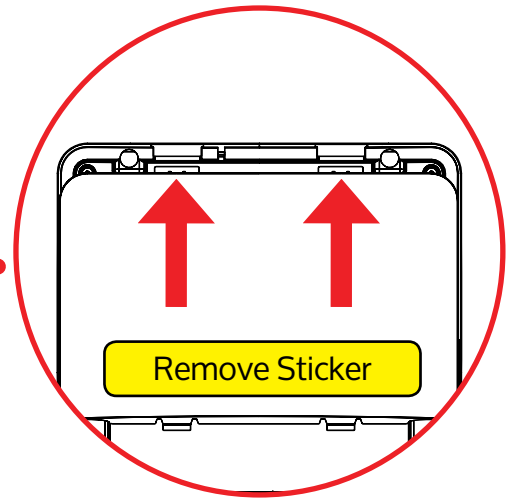
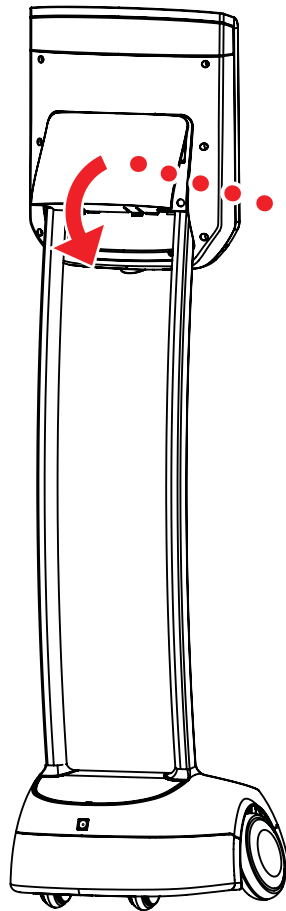
Push in tabs and remove head lid.

6.



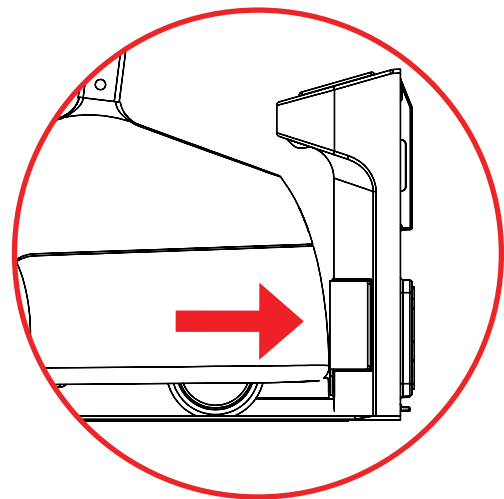
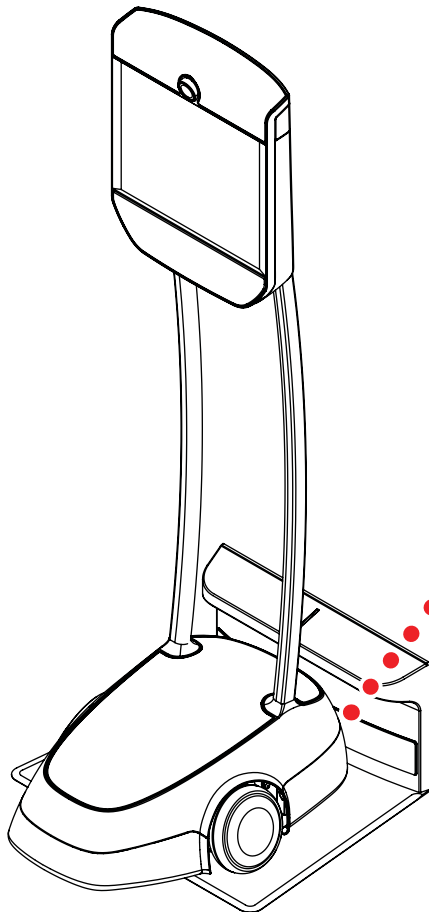
Plug keyboard into USB port.  
Follow on-screen instructions.

7.



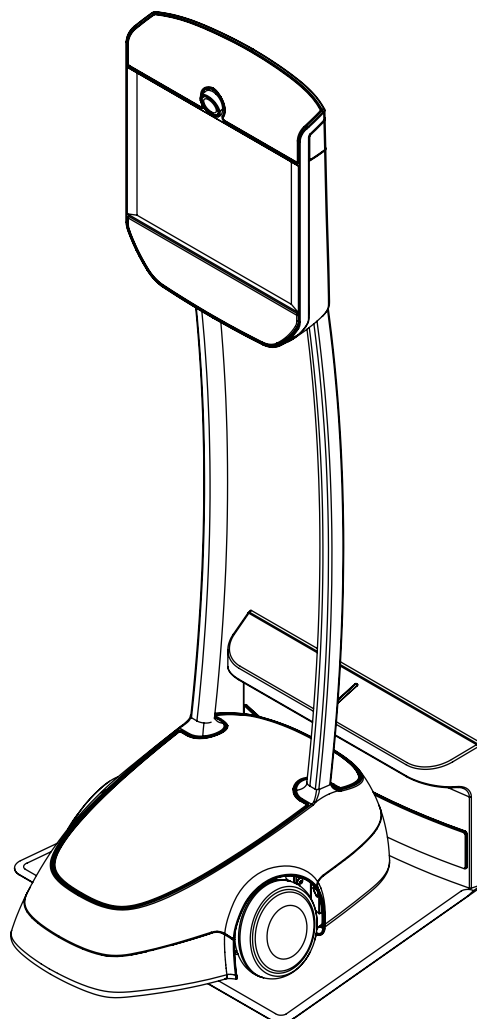
Unplug keyboard.  
Reattach head lid and remove sticker.

8.



Plug in power cord to Dock and outlet.  
Roll the BeamPro onto the Dock.

**NOTE:** The light on the dock will turn green  
when the BeamPro is charging.



For more information and customer support,  
please visit [www.suitabletech.com](http://www.suitabletech.com)

This equipment has been tested and found to comply with the limits for a Class B digital device, pursuant to part 15 of the FCC Rules. These limits are designed to provide reasonable protection against harmful interference in a residential installation. This equipment generates, uses and can radiate radio frequency energy and, if not installed and used in accordance with the instructions, may cause harmful interference to radio communications. However, there is no guarantee that interference will not occur in a particular installation. If this equipment does cause harmful interference to radio or television reception, which can be determined by turning the equipment off and on, the user is encouraged to try to correct the interference by one or more of the following measures: (1) Reorient or relocate the receiving antenna. (2) Increase the separation between the equipment and receiver. (3) Connect the equipment into an outlet on a circuit different from that to which the receiver is connected. (4) Consult the dealer or an experienced radio/TV technician for help.)

Co. 2014 Suitable Technologies, Inc.

beam™  
suitabletech.com